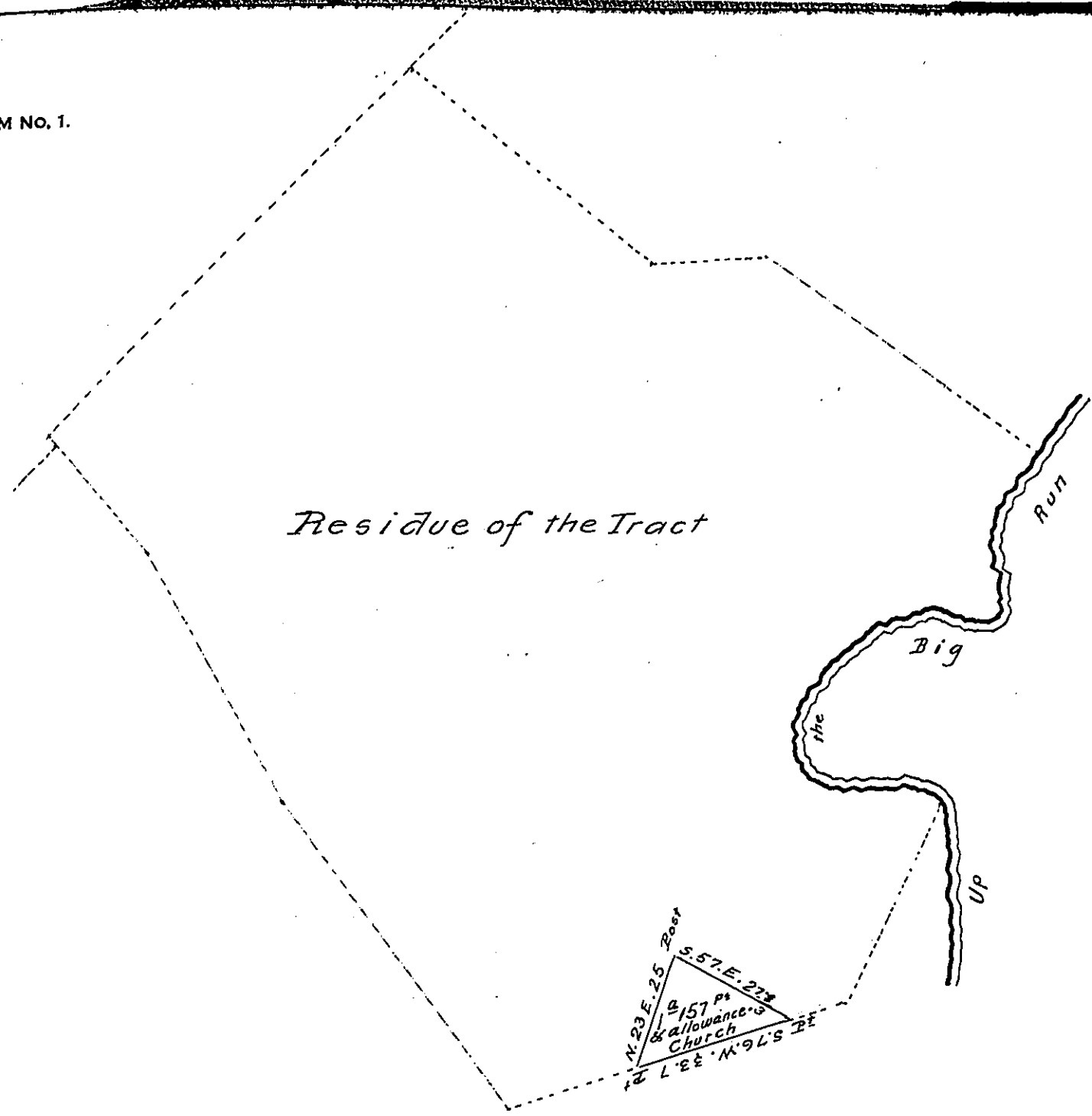


FORM NO. 1.



A Draught of a Tract of land situate in Newton (now Mitflin) Township
 Cumberland County containing One acre & one hundred & fifty seven
 perches & allowance of six per cent &c. Part of a Tract containing
 175 acres & allowance originally Surveyed on a Warrant to James
 Bogel dated 13th April 1787 for 200 acres
 Surveyed 9th April 1841 for a German Church

Patrick Davidson D.S.

To Jacob Sallade Esq.
 Surveyor General Pa.

IN TESTIMONY that the above is a copy of the original remaining on file in
 the Department of Internal Affairs of Pennsylvania, made
 conformably to an Act of Assembly approved the 16th day of
 February 1833, I have hereunto set my hand and caused
 the Seal of said Department to be affixed at Harrisburg,
 this eleventh day of September 1907

Henry Howell
 Secretary of Internal Affairs.